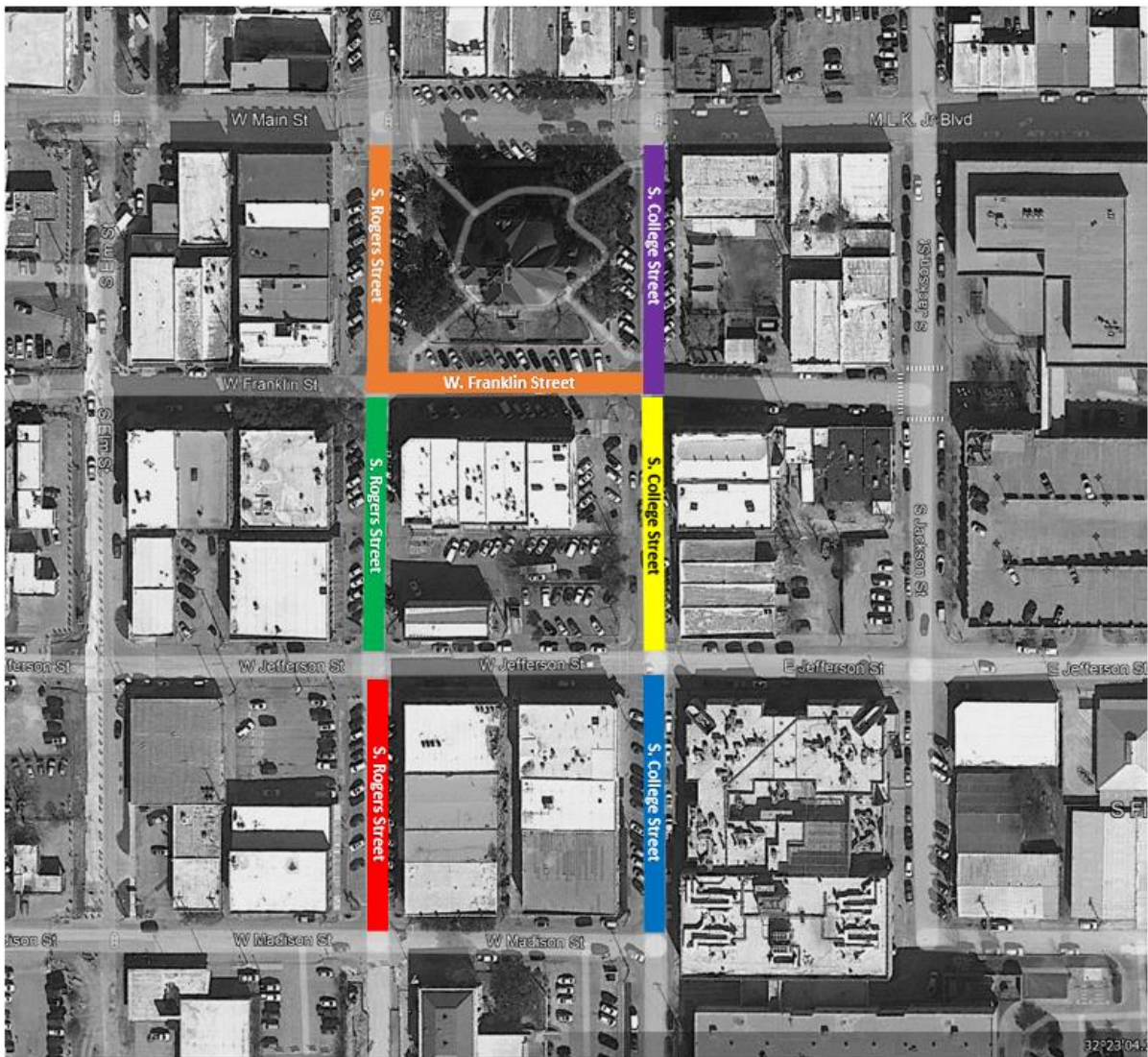




UPCOMING DOWNTOWN ROAD CLOSURES

Starting **MONDAY JULY 11th**, the City of Waxahachie Street Department will be crack sealing the asphalt in the downtown Waxahachie area. This process helps to prevent larger maintenance problems down the road. As a result, various road closures will be in effect on different days. Please review the attached map and legend for schedule.



LEGEND

	MONDAY 7/11 Road open, Parking spaces will be inaccessible
	TUESDAY 7/12 Road Closed, Parking Spaces will be inaccessible
	WEDNESDAY 7/13 Road Closed, Parking spaces will be inaccessible
	THURSDAY 7/14 Road Closed, Parking spaces will be inaccessible
	FRIDAY 7/15 Road Closed, Parking spaces will be inaccessible
	FRIDAY 7/15 Road open, Parking spaces will be inaccessible

Once the crack sealing is complete the Street Department will open up the road by the end of each day. Schedules are pending the weather and subject to change, please check the City website for up to date information.

Please note that this is a necessary first step to the final task of striping parking spaces. We anticipate striping parking spaces in the fall/winter of 2022.

Expect delays and use the alternate routes when possible. We appreciate your patience and cooperation. Please contact the City of Waxahachie Public Works and Engineering Department at 469-309-4300 or email publicworks@waxahachie.com with any questions or concerns.